



Published in final edited form as:

*N Engl J Med.* 2011 August 4; 365(5): 422–429. doi:10.1056/NEJMoa1010493.

## Emergence of a New Pathogenic Ehrlichia Species, Wisconsin and Minnesota, 2009

Bobbi S. Pritt, M.D., Lynne M. Sloan, B.S., Diep K. Hoang Johnson, B.S., Ulrike G. Munderloh, Ph.D., Susan M. Paskewitz, Ph.D., Kristina M. McElroy, D.V.M., Jevon D. McFadden, M.D., Matthew J. Binnicker, Ph.D., David F. Neitzel, M.S., Gongping Liu, Ph.D., William L. Nicholson, Ph.D., Curtis M. Nelson, B.S., Joni J. Franson, B.S., Scott A. Martin, M.D., Scott A. Cunningham, B.S., Christopher R. Steward, B.S., Kay Bogumill, R.N., Mary E. Bjorgaard, R.N., Jeffrey P. Davis, M.D., Jennifer H. McQuiston, D.V.M., David M. Warshauer, Ph.D., Mark P. Wilhelm, M.D., Robin Patel, M.D., Ph.D., Vipul A. Trivedi, M.D., and Marina E. Ereemeeva, M.D., Ph.D., Sc.D

Mayo Clinic, Rochester (B.S.P., L.M.S., M.J.B., S.A.C., M.P.W., R.P.); University of Minnesota, St. Paul (U.G.M., C.M.N.); and the Minnesota Department of Health, St. Paul (D.F.N., G.L.) — all in Minnesota; the Wisconsin Division of Public Health, Madison (D.K.H.J., J.D.M., C.R.S. J.P.D.); University of Wisconsin–Madison, Madison (S.M.P.); the Mayo Clinic Health System–Eau Claire (J.J.F., S.A.M., V.A.T.), and the Eau Claire City–County Health Department (K.B.) — both in Eau Claire; Burnett County Department of Health and Human Services, Siren (M.E.B.); and Wisconsin State Laboratory of Hygiene, Madison (D.M.W.) — all in Wisconsin; and the Epidemic Intelligence Service (K.M.E., J.D.M.) and Rickettsial Zoonoses Branch (W.L.N., J.H.M., M.E.E.), Centers for Disease Control and Prevention, Atlanta.

### Abstract

**Background**—Ehrlichiosis is a clinically important, emerging zoonosis. Only *Ehrlichia chaffeensis* and *E. ewingii* have been thought to cause ehrlichiosis in humans in the United States. Patients with suspected ehrlichiosis routinely undergo testing to ensure proper diagnosis and to ascertain the cause.

**Methods**—We used molecular methods, culturing, and serologic testing to diagnose and ascertain the cause of cases of ehrlichiosis.

**Results**—On testing, four cases of ehrlichiosis in Minnesota or Wisconsin were found not to be from *E. chaffeensis* or *E. ewingii* and instead to be caused by a newly discovered ehrlichia species. All patients had fever, malaise, headache, and lymphopenia; three had thrombocytopenia; and two

Copyright © 2011 Massachusetts Medical Society

Address reprint requests to Dr. Pritt at the Mayo Clinic, Division of Clinical Microbiology, Hilton 470-B, 200 1st St. SW, Rochester, MN 55905, or at pritt.bobbi@mayo.edu.

*Note added in proof:* After this article was submitted, Telford et al. reported findings of an *E. muris*-like bacterium in Wisconsin *I. scapularis* ticks collected during the 1990s.<sup>25</sup>

The findings and conclusions in this article are those of the authors and do not necessarily represent the official position of the Centers for Disease Control and Prevention.

Presented in part at the annual meeting of the American Society of Tropical Medicine and Hygiene, Washington, DC, November 18–22, 2009; the annual conference of the Epidemic Intelligence Service, Atlanta, April 19–23, 2010; the International Conference on Emerging Infectious Diseases, Atlanta, July 11–14, 2010; the 50th Interscience Conference on Antimicrobial Agents and Chemotherapy, Boston, September 12–15, 2010; the annual meeting of the American Society of Tropical Medicine and Hygiene, Atlanta, November 3–7, 2010; and the 6th International Meeting on Rickettsiae and Rickettsial Diseases, Heraklion, Greece, June 5–7, 2011. The findings reported here were also described in a Health Alert Network public health announcement by the Minnesota Department of Health and the Wisconsin Division of Public Health.

Disclosure forms provided by the authors are available with the full text of this article at NEJM.org.

had elevated liver-enzyme levels. All recovered after receiving doxycycline treatment. At least 17 of 697 *Ixodes scapularis* ticks collected in Minnesota or Wisconsin were positive for the same ehrlichia species on polymerase-chain-reaction testing. Genetic analyses revealed that this new ehrlichia species is closely related to *E. muris*.

**Conclusions**—We report a new ehrlichia species in Minnesota and Wisconsin and provide supportive clinical, epidemiologic, culture, DNA-sequence, and vector data. Physicians need to be aware of this newly discovered close relative of *E. muris* to ensure appropriate testing, treatment, and regional surveillance. (Funded by the National Institutes of Health and the Centers for Disease Control and Prevention.)

---

Ehrlichiosis and anaplasmosis are tickborne zoonoses caused by obligate intracellular gram-negative bacteria in the family Anaplasmataceae.<sup>1</sup> Symptoms typically include fever, myalgia, and headache, with rash in rare instances. Severe disease may be associated with gastrointestinal, renal, respiratory, and central nervous system involvement and, in rare cases, death.

In the United States, ehrlichiosis in humans is caused primarily by infection with *Ehrlichia chaffeensis*, which infects monocytes, and less commonly by *E. ewingii*, which infects granulocytes. *Anaplasma phagocytophilum* is closely related to the ehrlichiae and causes human granulocytic anaplasmosis.<sup>1,2</sup> *E. ewingii* and *E. chaffeensis* are transmitted to humans by the bite of an infected tick, *Amblyomma americanum*, whereas *A. phagocytophilum* is transmitted in the United States by the ticks *Ixodes scapularis* and *I. pacificus*.<sup>3</sup>

Ehrlichiosis is a clinically important, emerging zoonosis. *E. chaffeensis*, *A. phagocytophilum*, and *E. ewingii* were first recognized as human pathogens in 1991,<sup>4</sup> 1994,<sup>5</sup> and 1999,<sup>6</sup> respectively. Since then, *E. canis* and *E. muris* have been implicated as causes of human illness in Venezuela and Russia, respectively.<sup>7,8</sup> However, only *E. chaffeensis* and *E. ewingii* have been thought to cause ehrlichiosis in humans in the United States.

## Methods

### Patients

EDTA-anticoagulated samples of whole blood obtained from patients throughout the United States with suspected ehrlichiosis or anaplasmosis were submitted for polymerase-chain-reaction (PCR) diagnostic testing for ehrlichia and anaplasma at the Mayo Clinic in Minnesota. Patients with confirmed ehrlichiosis in Minnesota and Wisconsin were interviewed by staff members of local and state health departments according to a standardized questionnaire to obtain demographic, clinical, and epidemiologic information, and medical records were reviewed.

All participants provided written informed consent for collection and testing of additional blood specimens. Research protocols were approved and monitored by the institutional review boards at the Mayo Clinic and the Centers for Disease Control and Prevention (CDC).

### Real-Time PCR Assay

DNA was extracted from the blood specimens (MagNA Pure Instrument, Roche Applied Science) and tested for *E. ewingii*, *E. chaffeensis*, and *A. phagocytophilum* DNA with the use of a real-time PCR assay<sup>9</sup> with primers and fluorescence resonance energy transfer–labeled probes targeting a conserved region of the GroEL heat-shock protein operon. Polymorphisms in the sequence targeted by the probes allowed for differentiation of the

three species by means of analysis of melting temperature. Specimens with an atypical result (melting temperature outside the predefined ranges) were tested with the use of a SYBR Green PCR assay targeting the 16S ribosomal RNA gene (*rrs*) of Anaplasmataceae,<sup>10</sup> a nested PCR assay of the GroEL gene (*groEL*),<sup>11</sup> or broad-range *rrs* assays<sup>12</sup> (see Table 1 in the Supplementary Appendix, available with the full text of this article at NEJM.org).

### DNA Sequencing

Amplified DNA fragments were sequenced (3730 DNA sequencer, Applied Biosystems) and analyzed (Sequencher software, version 4.2; Gene Codes). New sequences were submitted to GenBank (accession numbers HM543745 for *rrs* and HM543746 for *groEL*). New, homologous sequences of infective bacteria and related bacteria were aligned with the use of ClustalW software, and phylogenetic analysis was conducted with the use of Molecular Evolutionary Genetics Analysis software, version 4.0.<sup>13</sup>

### Culture Isolation

Buffy-coat and erythrocyte fractions of the whole-blood specimens were processed and inoculated into a tick cell line (ISE6, derived from *I. scapularis*) and a mammalian cell line (RF/6A, derived from rhesus monkey choroid retina; American Type Culture Collection number CRL-1780), according to published protocols.<sup>14</sup> Mammalian cell cultures were incubated in RPMI 1640 medium with 10% fetal bovine serum at 37°C in 5% carbon dioxide, whereas ISE6 cultures were incubated at 34°C in sealed flasks.<sup>15</sup> Cells were examined microscopically for intracellular morulae (bacterial clusters) of ehrlichia and anaplasma with the use of phase-contrast or bright-field microscopy.

### Serologic Testing

Serum and plasma specimens from patients with an atypical *groEL* PCR product were tested for IgG-class antibodies reacting to *E. chaffeensis* or *A. phagocytophilum* with the use of a commercial indirect immunofluorescence assay (Focus Diagnostics).<sup>16</sup> Serum and plasma samples were also tested by means of noncommercial indirect immunofluorescence assays developed and used at the CDC for IgM- and IgG-class antibodies against *E. chaffeensis*, *A. phagocytophilum*, and an ehrlichia species isolated in this study<sup>17</sup>; antigens were derived from canine monocytic DH82 cultures infected with ehrlichia and human promyelocytic HL-60 cultures infected with *A. phagocytophilum*. A reciprocal titer of 64 or higher was considered positive for both assays.

### Morphologic Examination of Peripheral-Blood Smears

Wright-stained peripheral-blood smears from each patient with an atypical *groEL* PCR product were screened for the presence of intracellular morulae characteristic of ehrlichia species.

### Tick Collection and DNA Extraction

Ticks were collected in June and July 2009 by the Wisconsin Division of Public Health, Medical Entomology Laboratory, University of Wisconsin–Madison and the Minnesota Department of Health. Tick collection was conducted by dragging a fabric flag (1 m by 1 m) across vegetation at or near residences of patients in northwestern Wisconsin and northeastern, central, and northwestern Minnesota. DNA extraction from ticks was performed with the use of a modified version of a published protocol,<sup>18</sup> with three to five nymphs from Wisconsin processed at a time. DNA was tested with the use of the *groEL* fluorescence resonance energy transfer assay and the *rrs* SYBR Green PCR assay.

## Results

### Real-Time PCR Assay and Sequencing

From June 1 through December 31, 2009, a total of 4247 blood specimens from residents in 45 states were tested by means of *groEL* PCR assay. Of the 1518 specimens obtained from Wisconsin and Minnesota residents, 163 (10.7%) were positive for *A. phagocytophilum* (35 from Wisconsin and 128 from Minnesota), whereas none were positive for *E. chaffeensis* or *E. ewingii*. Three additional Wisconsin residents and one Minnesota resident had positive PCR tests with a melting temperature that was outside the melting temperature range for *E. chaffeensis*, *E. ewingii*, and *A. phagocytophilum* (Fig. 1 in the Supplementary Appendix). This atypical result was not found for the 2729 specimens collected from the 43 other states.

The four specimens with an atypical *groEL* PCR melting temperature also tested positive for Anaplasmataceae *rrs* with the use of the SYBR Green PCR assay. The nucleotide sequences of the amplified *rrs* and *groEL* fragments were identical among the four specimens and shared 98% sequence similarity with the homologous *rrs* and *groEL* genes of *E. muris* (Fig. 1).

### Culture Isolation

Two ehrlichia species isolates (designated Wisconsin 1 and 2) were cultured from blood specimens obtained from one of the four patients 3 and 4 days before culturing in ISE6 and RF/6A cell lines. Sequence analysis of the PCR-amplified portions of *rrs* showed that they were identical to each other and to the sequences obtained from the clinical specimens with the atypical melting-temperature results.

Morulae were detected with the use of phase-contrast microscopy of live RF/6A cultures 5 weeks after inoculation. Fixed and stained ISE6 cells contained one to three large morulae per cell, whereas RF/6A cells contained numerous, small morulae (Fig. 2).

### Serologic Testing

Of the four patients with atypical PCR results, two (Patients 2 and 4) (Table 1) were tested by means of the commercial indirect immunofluorescence assay. Serum samples collected from Patient 2 were negative for IgG antibodies to *E. chaffeensis* (i.e., titer <64) on days 2 and 15 after the onset of fever, whereas serum specimens from Patient 4 were positive (i.e., titer ≥64) for IgG antibodies on day 5 (titer of 256) and day 54 (titer of 1024) after the onset of fever.

In addition, serum and plasma specimens from three of these four patients were tested by means of the CDC indirect immunofluorescence assays. At least one specimen from each patient tested was positive for IgM or IgG antibodies reacting to *E. chaffeensis*, and the titers were even higher in response to the new ehrlichia species. A specimen obtained 15 days after the onset of illness from Patient 2 had high titers of IgM and IgG antibodies against the new ehrlichia species; in a specimen obtained 188 days after onset, IgM and IgG antibody titers were substantially reduced. Patient 4 had a strong seroconversion with a high IgG antibody titer 76 days after infection. No antibodies reacting to *A. phagocytophilum* antigens were detected (i.e., titer <64) in three patients with the use of the commercial or noncommercial assay. Specimens from Patient 3 were not available.

### Patients and Clinical Presentation

The four patients had an onset of illness between June 8 and October 27, 2009. Their ages ranged from 23 to 51 years; two were men (Table 2). All four patients whose specimens were positive for the newly discovered ehrlichia species reported fever, fatigue, and

headache. Patient 2 also reported nausea and vomiting. The interval between the onset of illness and the physician visit was 1 to 4 days. Laboratory findings included lymphopenia (in all four patients), thrombocytopenia (in three), elevated hepatic aminotransferase levels (in one of the three patients tested), and mildly elevated alkaline phosphatase levels (in one of the two patients tested). No morulae or other blood parasites were detected in peripheral-blood smears.

Two patients had previously received solid-organ transplants and were taking immunosuppressive drugs at the time of diagnosis. One patient had cystic fibrosis and had undergone bilateral lung transplantation 2 years before the onset of illness; medications received included mycophenolate mofetil, cyclosporine, and prednisone. This patient was hospitalized for 3 days during the acute illness for management of an infiltrate in the left lung and pleural effusion on the left side for which a specific cause was not determined. The symptoms improved after administration of ceftazidime and doxycycline. The second patient had received a renal allograft 4 years before the onset of symptoms and was receiving mycophenolate mofetil, tacrolimus, and prednisone. This patient had acute kidney injury (serum creatinine level, 2.2 mg per deciliter [194.5  $\mu$ mol per liter] vs. a baseline of 1.2 mg per deciliter [106.1  $\mu$ mol per liter]) and was successfully treated with doxycycline. The two immunocompetent patients had relatively mild illnesses and were successfully treated with doxycycline. The patient from Wisconsin received doxycycline at 100 mg twice daily for 21 days, and the patient from Minnesota received the same regimen for 10 days.

### Epidemiologic Investigation

All patients reported peridomestic (e.g., from mowing the lawn) or recreational exposure to ticks or wooded areas (Fig. 2 in the Supplementary Appendix). The three Wisconsin patients resided in Eau Claire or Burnett County, and one reported traveling to Bayfield County in northwest Wisconsin 1 week before the onset of illness. The Minnesota patient resided in Rice County and had traveled to a wooded area in Pine County, Minnesota, within 30 days before the onset of symptoms.

### Tick Collection and PCR Assay

A total of 697 ticks were tested. DNA from the newly discovered ehrlichia species was detected in 16 of 534 *I. scapularis* ticks (7 nymphs and 9 adults) from Minnesota, as well as in 1 group of 5 nymphs (of 154 total) from Wisconsin (where the minimum infective rate is 6.5 infected nymphs per 1000 nymphs tested) (Table 2 in the Supplementary Appendix). No DNA from the newly discovered ehrlichia species was detected in 9 *I. scapularis* adults from Wisconsin or 88 *Dermacentor variabilis* adults from Wisconsin.

### Discussion

We have identified a new ehrlichia species (subsequently referred to as ehrlichia species Wisconsin) in blood from four patients living in Wisconsin or Minnesota, by using molecular, culture, and serologic methods. The presence of ehrlichia species Wisconsin DNA in blood specimens from these patients collected during the period of acute illness suggests that this organism was the etiologic agent of their infection. This is supported by the results of serologic testing with whole-cell antigens of the Wisconsin isolate: IgM and IgG antibody responses against the species were positive in the three patients tested, with consistently higher titers than those to *E. chaffeensis*. All four patients recovered after administration of doxycycline, which is the antibiotic of choice for the treatment of ehrlichiosis.

The identification of ehrlichia species Wisconsin in humans has important clinical and epidemiologic implications. Ehrlichiosis was not previously thought to be endemic in Minnesota and Wisconsin and would not be routinely tested for among patients from these areas. Also, commercial tests for ehrlichiosis may fail to provide an accurate identification of this organism. The considerable serologic cross-reactivity of the Wisconsin isolate with *E. chaffeensis* could confound diagnostic and epidemiologic studies and may explain the recent increase in the numbers of cases attributed to *E. chaffeensis* infection in Wisconsin and Minnesota on the basis of serologic testing only. In addition, PCR assays for *E. chaffeensis* and *E. ewingii* may not detect ehrlichia species Wisconsin because of lack of primer and probe homology. The ehrlichia–anaplasma real-time *groEL* PCR assay used in our investigation has the advantage of providing differential detection of ehrlichia species Wisconsin from *E. chaffeensis*, *E. ewingii*, and *A. phagocytophilum* on the basis of differences in DNA composition of the amplified fragment.<sup>9</sup> Finally, detection of morulae in peripheral-blood samples from infected persons is an unreliable means of diagnosing infection with ehrlichia species Wisconsin. Morulae are detected infrequently in blood from patients infected with ehrlichia species<sup>19</sup> and were not found in blood from our four patients.

Ehrlichia infections in the United States are commonly transmitted by *A. americanum*. However, the northern range for *A. americanum* is not thought to extend into Wisconsin and Minnesota, and public submissions of *A. americanum* ticks to the University of Wisconsin–Madison or the Minnesota Department of Health are uncommon. In contrast, both *D. variabilis* and *I. scapularis* are abundant, human-biting species in northwestern Wisconsin and Minnesota. The presence of ehrlichia species Wisconsin DNA in at least 17 *I. scapularis* nymphs and adults, as well as the absence of ehrlichia DNA in the *D. variabilis* ticks tested, suggests that *I. scapularis* is a vector for ehrlichia species Wisconsin. Extended investigation and tick surveillance are required to understand the distribution of this agent in Wisconsin and Minnesota and to definitively implicate a specific tick vector.

The new ehrlichia species reported in this study is closely related to *E. muris* (with approximately 98% sequence homology), but its exact taxonomic placement cannot yet be determined, because only a few isolates and limited genetic data are available. *E. muris* is considered to be an Old World pathogen found in different ticks of the *I. persulcatus* complex ranging from Eastern Europe to Japan.<sup>10,20,21</sup> *E. muris* DNA has been detected in the blood of small rodents and deer from these areas,<sup>22</sup> suggesting that these animals may be reservoirs of *E. muris* and related organisms. We are also aware of at least 2 PCR-confirmed and 84 serologically diagnosed cases in humans attributed to *E. muris* infection in the Perm region of Russia.<sup>12</sup> Similarly, Japanese investigators reported a 1.1% seroprevalence of antibodies against *E. muris* among 1893 Tokyo residents, with an even higher seroprevalence among rodents (6 to 63%)<sup>23</sup>; however, it is difficult to ascertain whether these antibodies in mice and humans are related to *E. muris* or to other antigenically related organisms, because multiple ehrlichia agents have been reported from the same region.<sup>10,21,24</sup>

In summary, we have characterized a newly discovered ehrlichia species with supportive clinical, epidemiologic, culture, DNA-sequence, and vector data. Further assessment of the ecologic, epidemiologic, and clinical features of the infection caused by this species is required to facilitate its distinction from other known tickborne infections in this region. To guide diagnostic testing and treatment, physicians should be aware that a novel pathogenic ehrlichia agent is present in Minnesota and Wisconsin and that organism-specific PCR and serologic testing can be used to identify the cause of suspected infections.

## Supplementary Material

Refer to Web version on PubMed Central for supplementary material.

## Acknowledgments

Supported in part by a grant from the National Institutes of Health (R01 AI042792, to Dr. Munderloh) and a cooperative agreement with the CDC (5U50C1000483-03, to Mr. Neitzel).

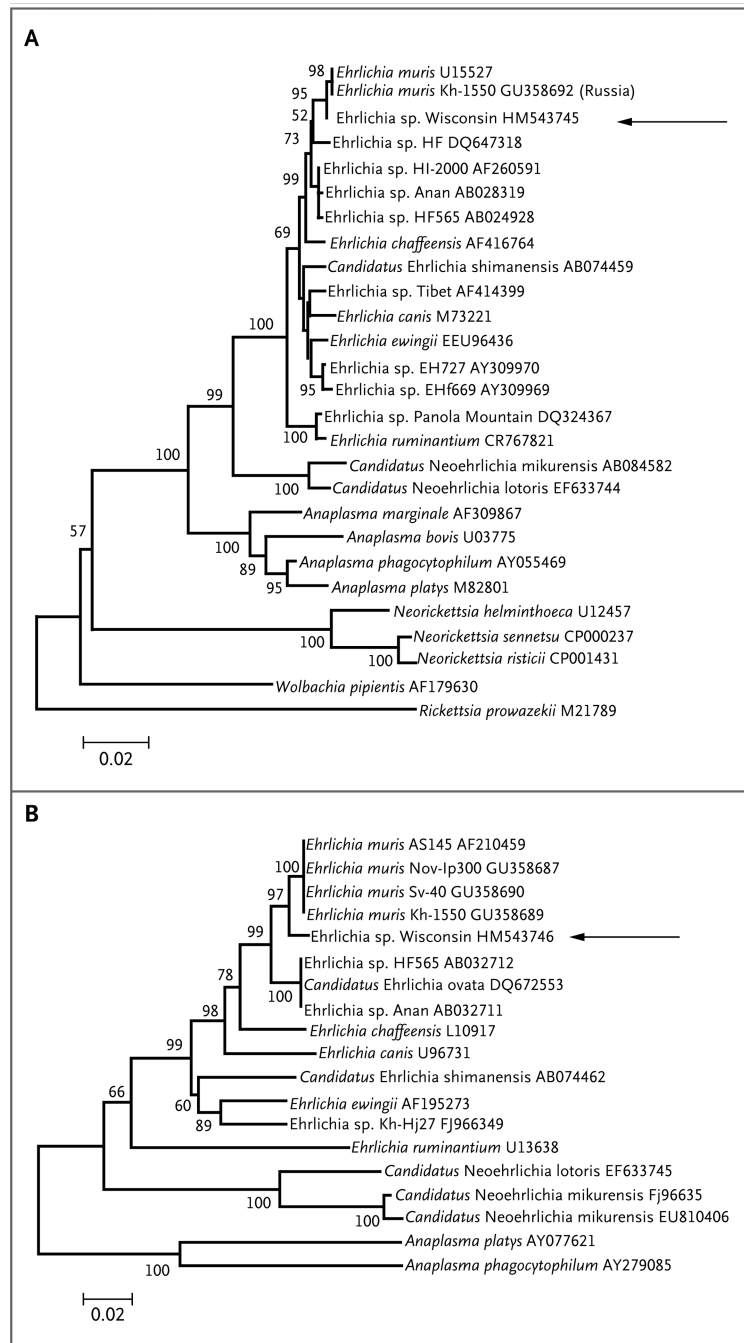
We thank Richard Thoun, Denise Wirth, and Paulette Magur from the Eau Claire City County Health Department; Carol Larson from the Burnett County Department of Health and Human Services; Sue Shea from the Mayo Clinic Health System–Eau Claire; Richard Heffernan, Tom Haupt, and Kristin Hardy from the Wisconsin Division of Public Health; and Gregory A. Dasch, Aubree Roche, and Arianna Salazar from the Rickettsial Zoonoses Branch, CDC.

## REFERENCES

- Dumler JS, Barbet AF, Bekker CP, et al. Reorganization of genera in the families Rickettsiaceae and Anaplasmataceae in the order Rickettsiales: unification of some species of Ehrlichia with Anaplasma, Cowdria with Ehrlichia and Ehrlichia with Neorickettsia, descriptions of six new species combinations and designation of Ehrlichia equi and 'HGE agent' as subjective synonyms of Ehrlichia phagocytophila. *Int J Syst Evol Microbiol.* 2001; 51:2145–2165. [PubMed: 11760958]
- Demma LJ, Holman RC, McQuiston JH, Krebs JW, Swerdlow DL. Epidemiology of human ehrlichiosis and anaplasmosis in the United States, 2001–2002. *Am J Trop Med Hyg.* 2005; 73:400–409. [PubMed: 16103612]
- Childs JE, Paddock CD. The ascendancy of *Amblyomma americanum* as a vector of pathogens affecting humans in the United States. *Annu Rev Entomol.* 2003; 48:307–337. [PubMed: 12414740]
- Anderson BE, Dawson JE, Jones DC, Wilson KH. Ehrlichia chaffeensis, a new species associated with human ehrlichiosis. *J Clin Microbiol.* 1991; 29:2838–2842. [PubMed: 1757557]
- Chen SM, Dumler JS, Bakken JS, Walker DH. Identification of a granulocytotropic Ehrlichia species as the etiologic agent of human disease. *J Clin Microbiol.* 1994; 32:589–595. [PubMed: 8195363]
- Buller RS, Arens M, Hmiel SP, et al. *Ehrlichia ewingii*, a newly recognized agent of human ehrlichiosis. *N Engl J Med.* 1999; 341:148–155. [PubMed: 10403852]
- Perez M, Rikihisa Y, Wen B. Ehrlichia canis-like agent isolated from a man in Venezuela: antigenic and genetic characterization. *J Clin Microbiol.* 1996; 34:2133–2139. [PubMed: 8862572]
- Nefedova VV, Korenberg EI, Kovalevski IuV, Gorelova NB, Vorob'eva NN. Microorganisms of the order Rickettsiales in taiga tick (*Ixodes persulcatus* Sch.) from the Pre-Ural region. *Vestn Ross Akad Med Nauk.* 2008; 7:47–50. (In Russian.). [PubMed: 18756787]
- Bell CA, Patel R. A real-time combined polymerase chain reaction assay for the rapid detection and differentiation of *Anaplasma phagocytophilum*, *Ehrlichia chaffeensis*, and *Ehrlichia ewingii*. *Diagn Microbiol Infect Dis.* 2005; 53:301–306. [PubMed: 16263231]
- Eremeeva ME, Oliveira A, Moriarity J, et al. Detection and identification of bacterial agents in *Ixodes persulcatus* Schulze ticks from the north western region of Russia. *Vector Borne Zoonotic Dis.* 2007; 7:426–436. [PubMed: 17767409]
- Takano A, Ando S, Kishimoto T, et al. Presence of a novel Ehrlichia sp. in *Ixodes granulatus* found in Okinawa, Japan. *Microbiol Immunol.* 2009; 53:101–106. [PubMed: 19291093]
- Eremeeva ME, Gerns HL, Lydy SL, et al. Bacteremia, fever, and splenomegaly caused by a newly recognized bartonella species. *N Engl J Med.* 2007; 356:2381–2387. [PubMed: 17554119]
- Tamura K, Dudley J, Nei M, Kumar S. MEGA4: Molecular Evolutionary Genetics Analysis (MEGA) software version 4.0. *Mol Biol Evol.* 2007; 24:1596–1599. [PubMed: 17488738]
- Munderloh UG, Silverman DJ, MacNamara KC, Ahlstrand GG, Chatterjee M, Winslow GM. *Ixodes ovatus* Ehrlichia exhibits unique ultrastructural characteristics in mammalian endothelial and tick-derived cells. *Ann N Y Acad Sci.* 2009; 1166:112–119. [PubMed: 19538270]

15. Nelson CM, Herron MJ, Felsheim RF, et al. Whole genome transcription profiling of *Anaplasma phagocytophilum* in human and tick host cells by tiling array analysis. *BMC Genomics*. 2008; 9:364. [PubMed: 18671858]
16. Olano JP, Hogrefe W, Seaton B, Walker DH. Clinical manifestations, epidemiology, and laboratory diagnosis of human monocytotropic ehrlichiosis in a commercial laboratory setting. *Clin Diagn Lab Immunol*. 2003; 10:891–896. [PubMed: 12965923]
17. Nicholson WL, Comer JA, Sumner JW, et al. An indirect immunofluorescence assay using a cell culture-derived antigen for detection of antibodies to the agent of human granulocytic ehrlichiosis. *J Clin Microbiol*. 1997; 35:1510–1516. [PubMed: 9163471]
18. Cao WC, Gao YM, Zhang PH, et al. Identification of *Ehrlichia chaffeensis* by nested PCR in ticks from Southern China. *J Clin Microbiol*. 2000; 38:2778–2880. [PubMed: 10878087]
19. Ismail N, Bloch KC, McBride JW. Human ehrlichiosis and anaplasmosis. *Clin Lab Med*. 2010; 30:261–292. [PubMed: 20513551]
20. Spitalská E, Boldis V, Kostanová Z, Kocianová E, Stefanidesová K. Incidence of various tick-borne microorganisms in rodents and ticks of central Slovakia. *Acta Virol*. 2008; 52:175–179. [PubMed: 18999892]
21. Rar VA, Fomenko NV, Dobrotvorskyy AK, et al. Tickborne pathogen detection, Western Siberia, Russia. *Emerg Infect Dis*. 2005; 11:1708–1715. [PubMed: 16318722]
22. Tamamoto C, Seino N, Suzuki M, Kaji K, Takahashi H, Inokuma H. Detection of *Ehrlichia muris* DNA from sika deer (*Cervus nippon yesoensis*) in Hokkaido, Japan. *Vet Parasitol*. 2007; 150:370–373. [PubMed: 17964725]
23. Kawahara M, Ito T, Suto C, et al. Comparison of *Ehrlichia muris* strains isolated from wild mice and ticks and serologic survey of humans and animals with *E. muris* as antigen. *J Clin Microbiol*. 1999; 37:1123–1129. [PubMed: 10074536]
24. Alekseev AN, Dubinina HV, Van De Pol I, Schouls LM. Identification of *Ehrlichia* spp. and *Borrelia burgdorferi* in Ixodes ticks in the Baltic regions of Russia. *J Clin Microbiol*. 2001; 39:2237–2242. [PubMed: 11376063]
25. Telford SR III, Goethert HK, Cunningham JA. Prevalence of *Ehrlichia muris* in Wisconsin deer ticks collected during the mid 1990s. *Open Microbiol J*. 2011; 5:18–20. [PubMed: 21643499]

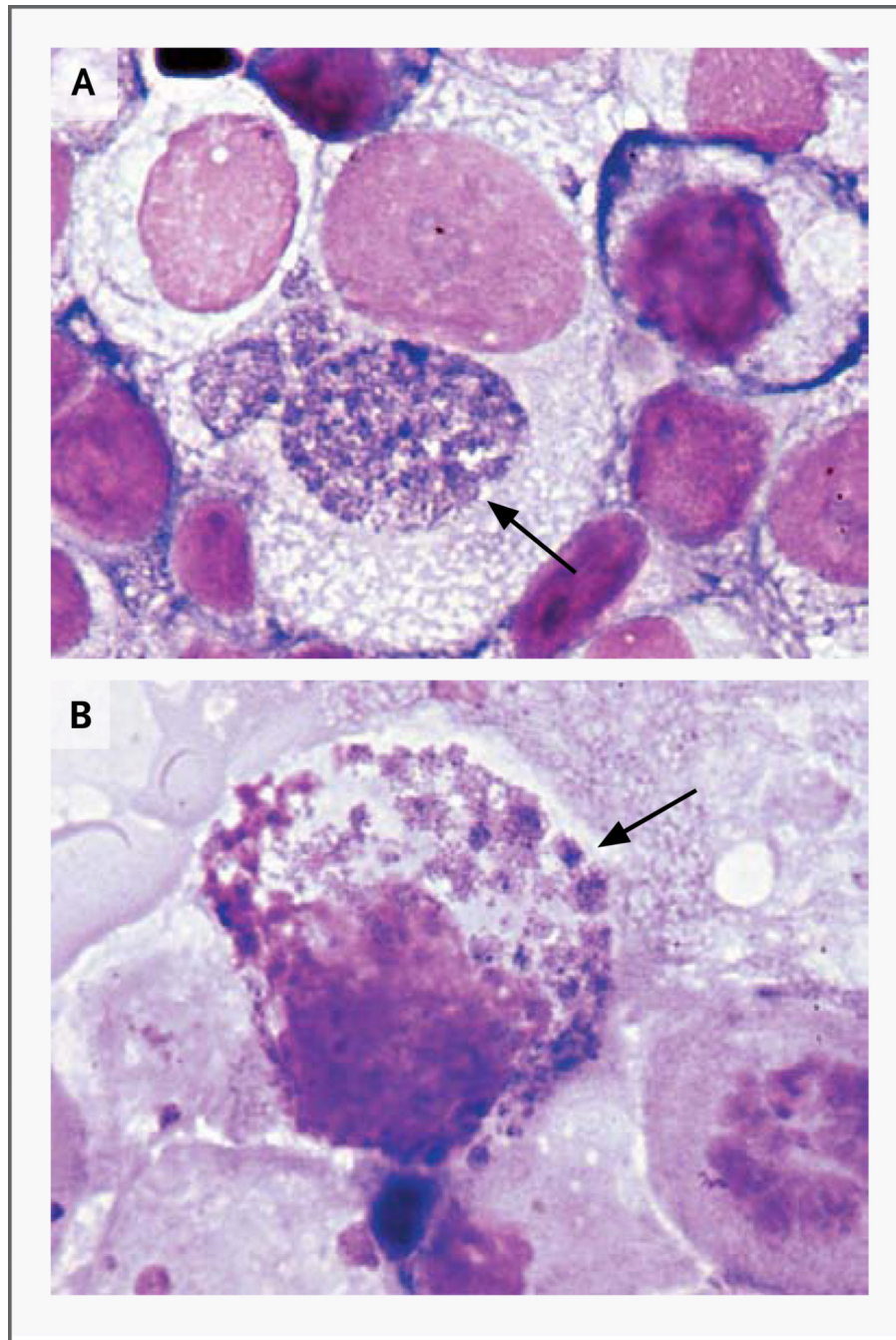




### Figure 1. Genetic Relationships between the New Ehrlichia Species and Related Bacteria

The arrow to the right of each phylogenetic tree indicates the newly discovered ehrlichia species (called “Wisconsin”). Panel A shows the phylogeny based on the 16S ribosomal RNA gene (*rrs*), inferred with the use of the minimum-evolution method and with distances calculated by means of the Jukes–Cantor method as the number of base substitutions per site. Panel B shows the phylogeny based on the GroEL heat-shock protein operon gene (*groEL*), inferred with the use of the neighbor-joining method and with distances calculated by means of the Kimura two-parameter method as the number of base substitutions per site. The percentage of replicate trees in which the associated taxa clustered together in the bootstrap test (of 1000 replicates) is shown to the left of each branch. The trees are drawn to

scale, with branch lengths in the same units as those of the evolutionary distances (see scale bars) used to infer the phylogenetic tree. Positions containing gaps, missing data, and primer sequences were eliminated from the data set. A total of 1160 positions for *rrs* and 591 positions for *groEL* were analyzed. Phylogenetic analyses were conducted with Molecular Evolutionary Genetics Analysis software, version 4.0.<sup>13</sup> The GenBank accession number is listed at the end of each isolate name.



**Figure 2. Intracellular Morulae of the New Ehrlichia Species in the ISE6 and RF/6A Cell Cultures**  
Panel A shows the ISE6 cell line, and Panel B shows the RF/6A cell line. Morulae are indicated by arrows (Giemsa stain).

Table 1

Results of Tests for IgM and IgG Antibodies against the New Ehrlichia Species, *Ehrlichia chaffeensis*, and *Anaplasma phagocytophilum*.\*

Patient No. <sup>†</sup>	Days from Illness Onset to Specimen Collection	Specimen Type	Reciprocal IgM and IgG Titer, CDC Assay						Reciprocal IgG Titer, Mayo Clinic Assay	
			New Ehrlichia Species		<i>E. chaffeensis</i>		<i>A. phagocytophilum</i>		<i>E. chaffeensis</i>	<i>A. phagocytophilum</i>
			IgM	IgG	IgM	IgG	IgM	IgG	IgM	IgG
1	198	Plasma	256	128	256	<16	<16	<16	NA	NA
2	2	Serum	NA	NA	NA	<32	NA	<32	<64	<64
2	15	Serum	512	256	256	64	<16	<16	<64	<64
2	188	Plasma	16	64	<16	32	<16	<16	NA	NA
4	7	Serum	NA	NA	NA	NA	NA	NA	256	<64
4	46	Serum	NA	NA	NA	NA	NA	NA	1024	<64
4	76	Plasma	32	2048	<16	2048	<16	<16	NA	NA

\* Antibody titers were assessed with the use of a noncommercial indirect immunofluorescence assay at the Centers for Disease Control and Prevention and with the use of a commercial indirect immunofluorescence assay (testing for IgG antibody but not IgM antibody) at the Mayo Clinic. NA denotes not available.

<sup>†</sup> Specimens from Patient 3 were not available for testing.

**Table 2**

Laboratory Test Results in the Four Patients Infected with the New Ehrlichia Species, Shortly after Presentation.\*

Patient No.	Age yr	Sex	White-Cell Count	Lymphocyte Count $\times 10^9/\text{liter}$	Platelet Count	AST	ALT	Alkaline Phosphatase U/liter
1	51	M	3.4	0.48	87	76	75	NA
2	23	M	3.6	0.41	104	42	NA	134
3	50	F	5.0	0.84	132	NA	NA	NA
4	50	F	3.6	0.54	212	16	NA	88
Normal range			3.5–10.5	0.9–2.9	150–450	8–48	7–55	45–115

\* ALT denotes alanine aminotransferase, AST aspartate aminotransferase, and NA not available (not performed or not reported).